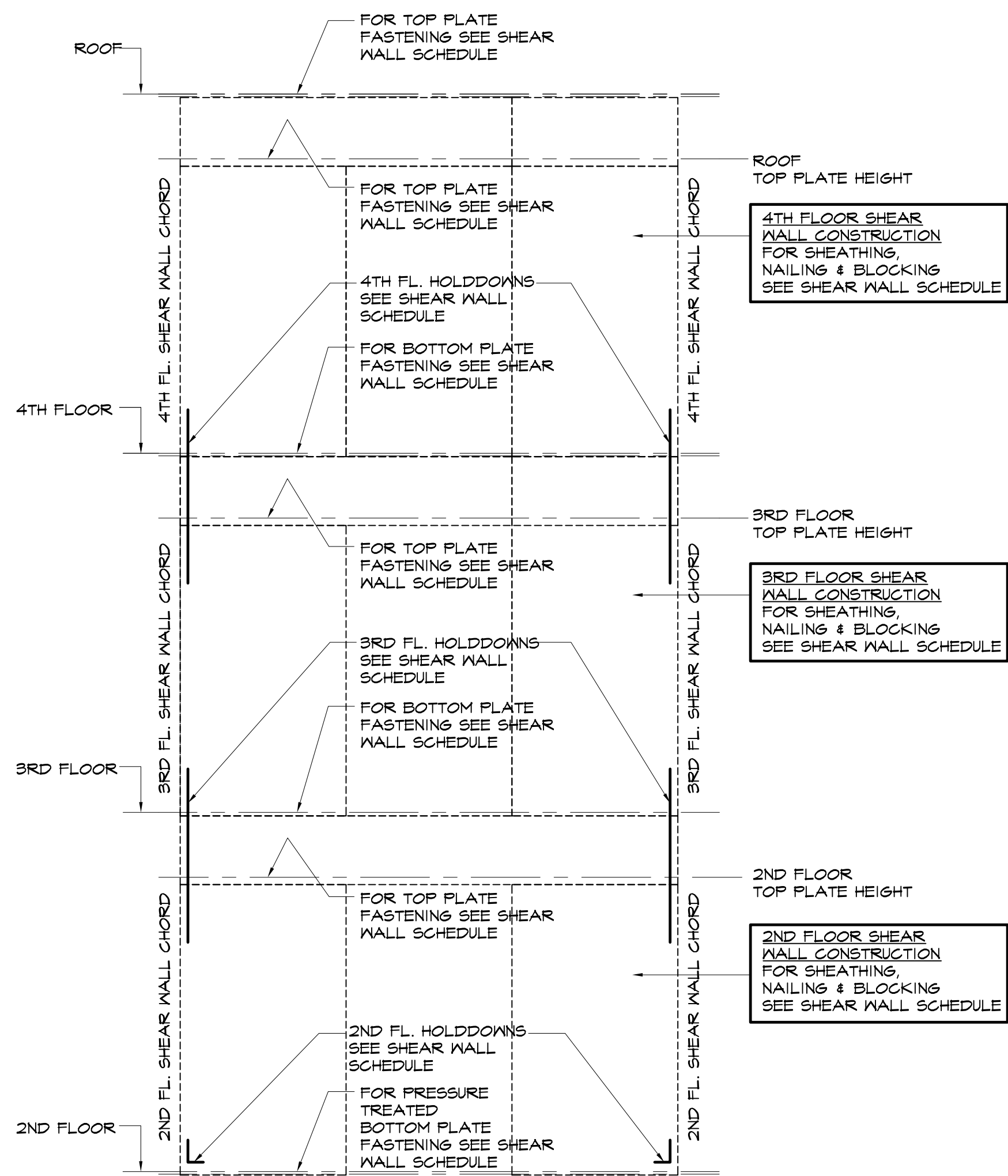


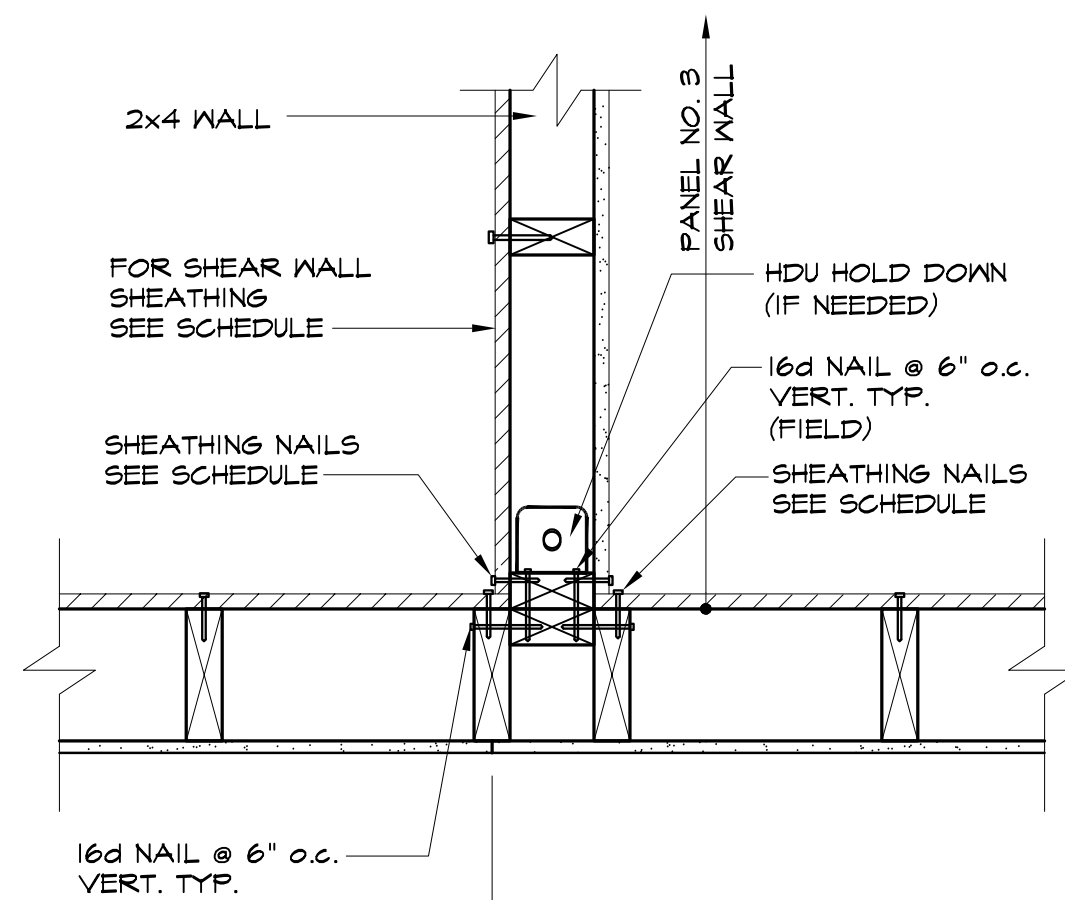


Reviewed for Code Compliance
Inspection Division
Approved with Conditions

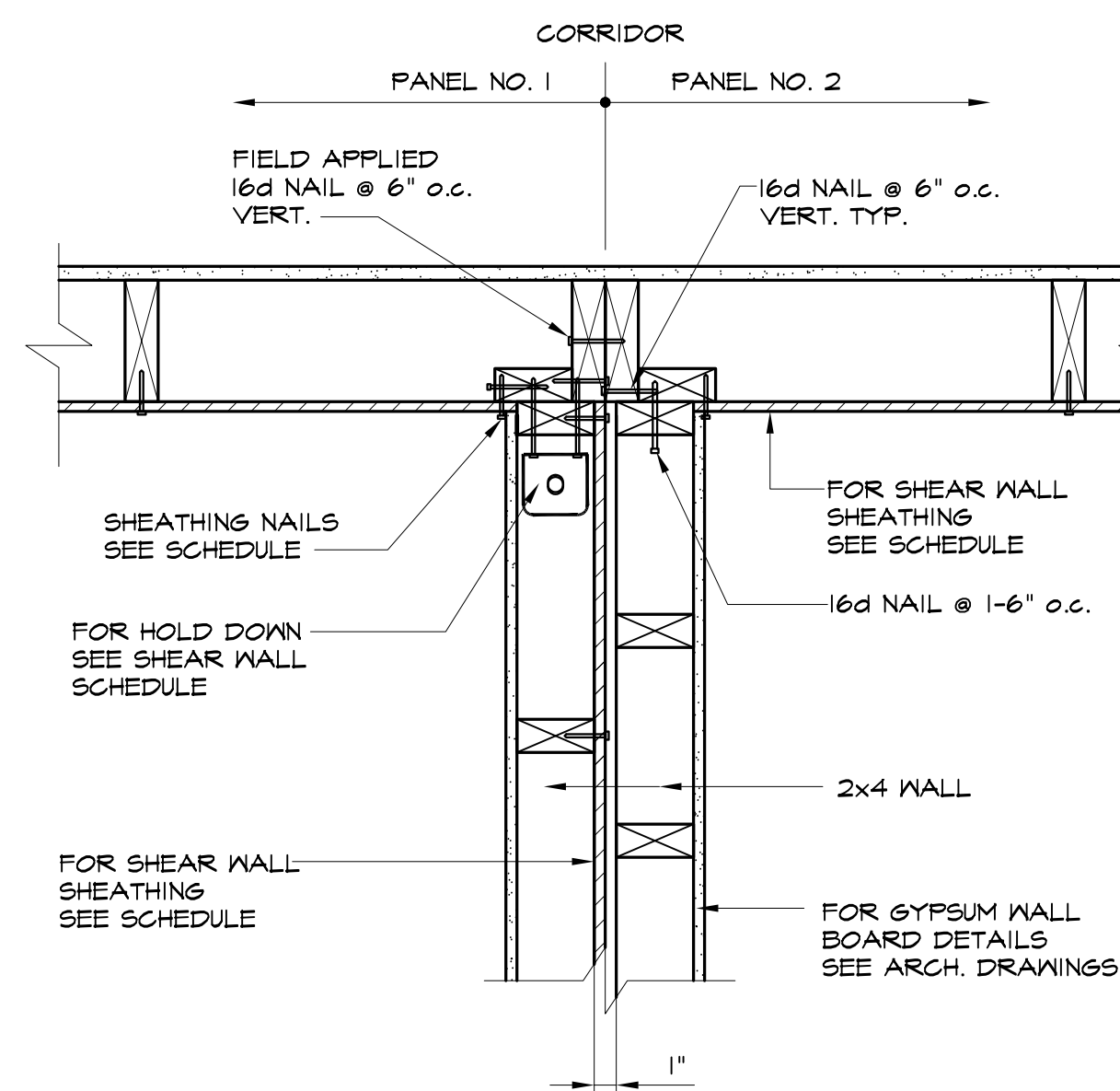
Date: 05/16/14



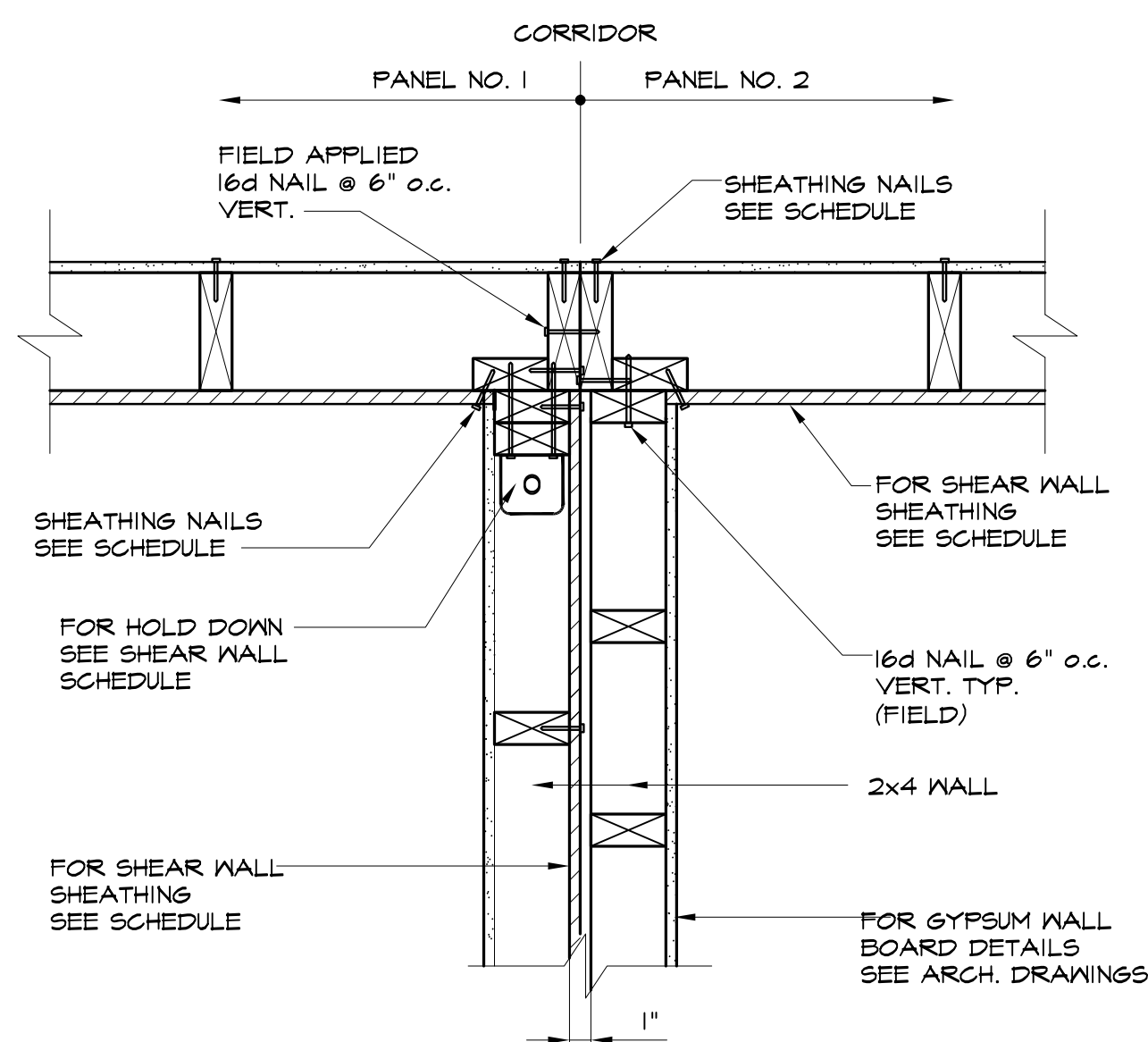
SHEAR WALL ELEVATION



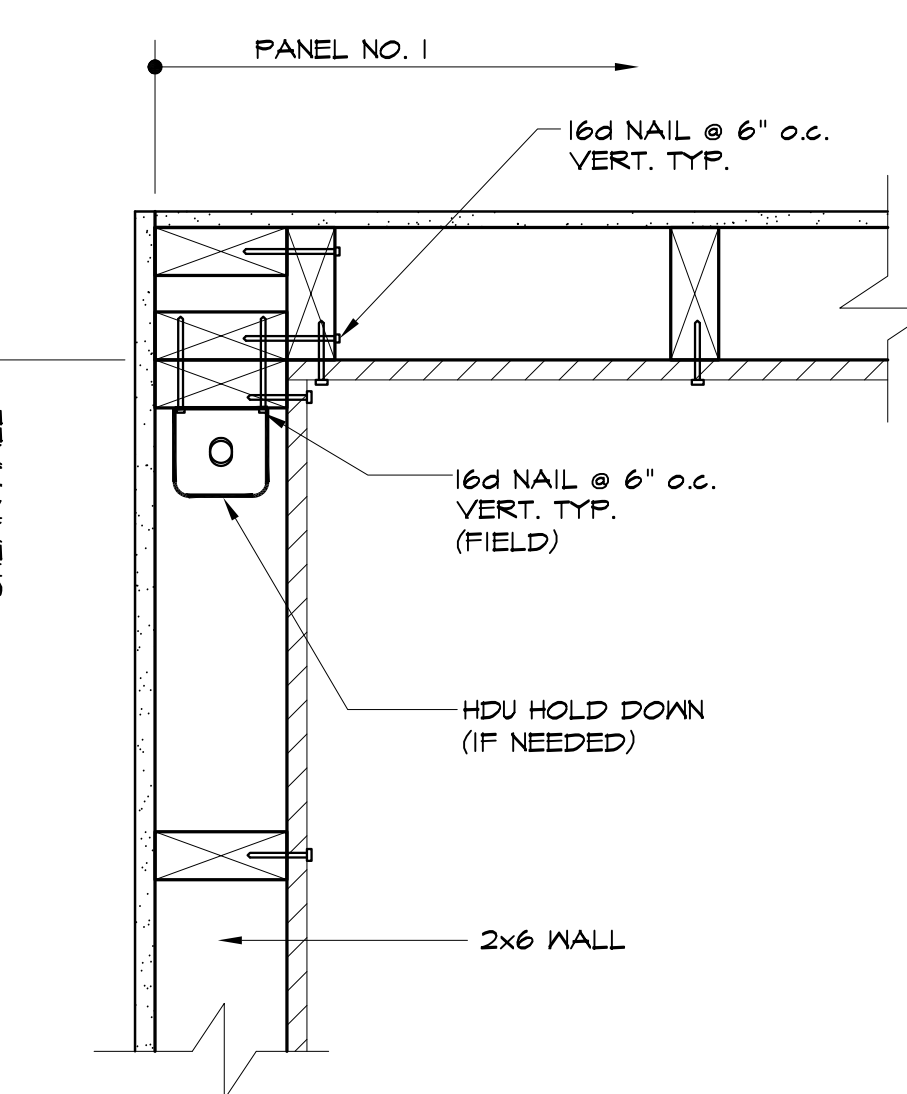
TYPICAL SHEAR WALL DETAILS
AT CORRIDOR WALL



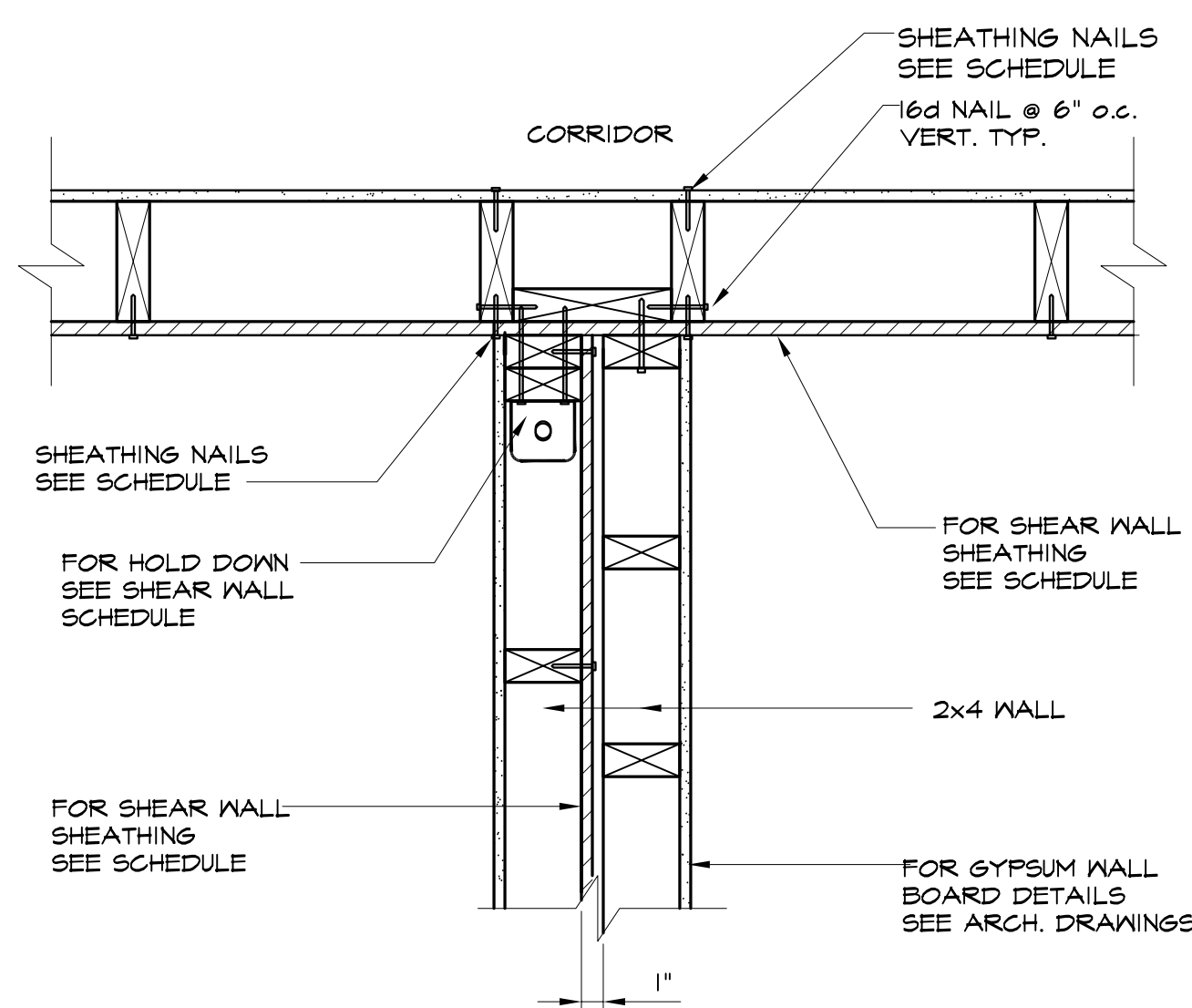
TYPICAL SHEAR WALL DETAIL
AT DOUBLE WALL AT EXTERIOR WALL



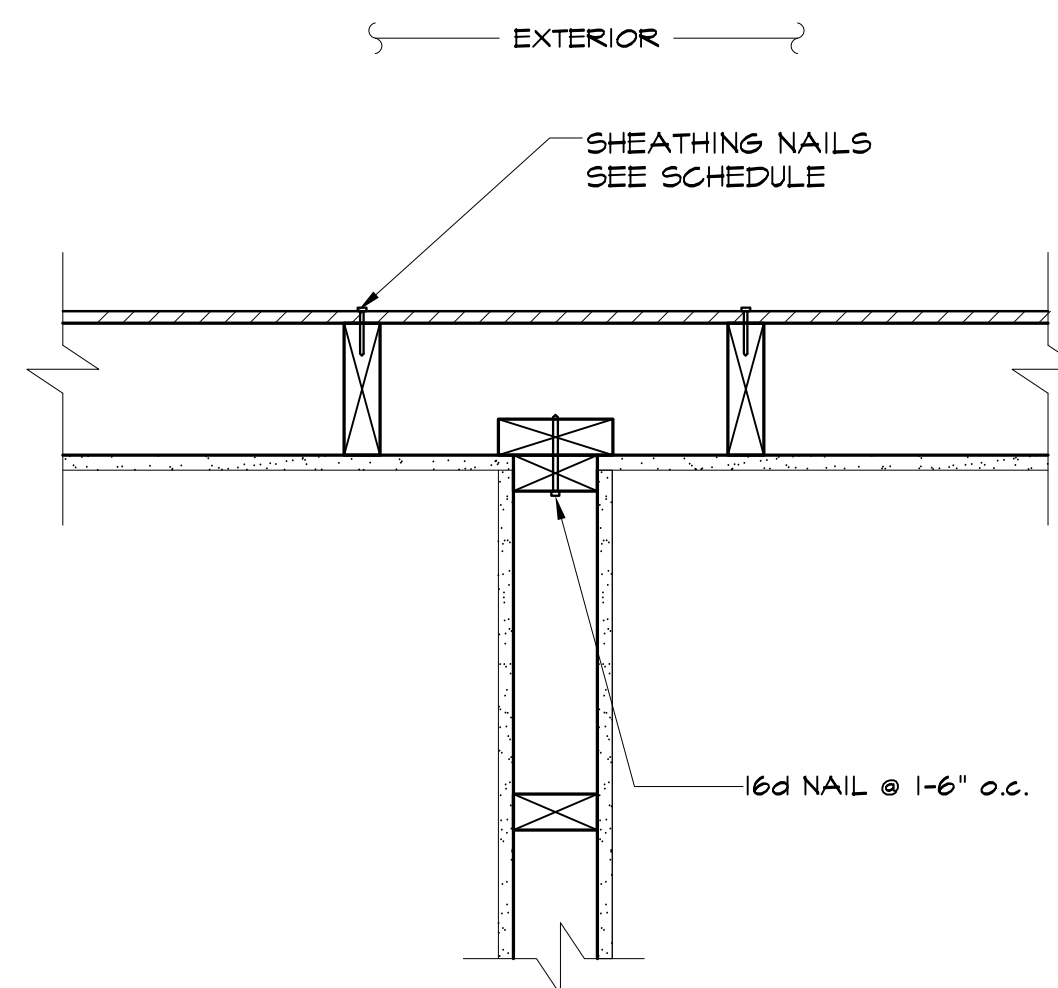
CORRIDOR INTERSECTION AT PANEL POINT



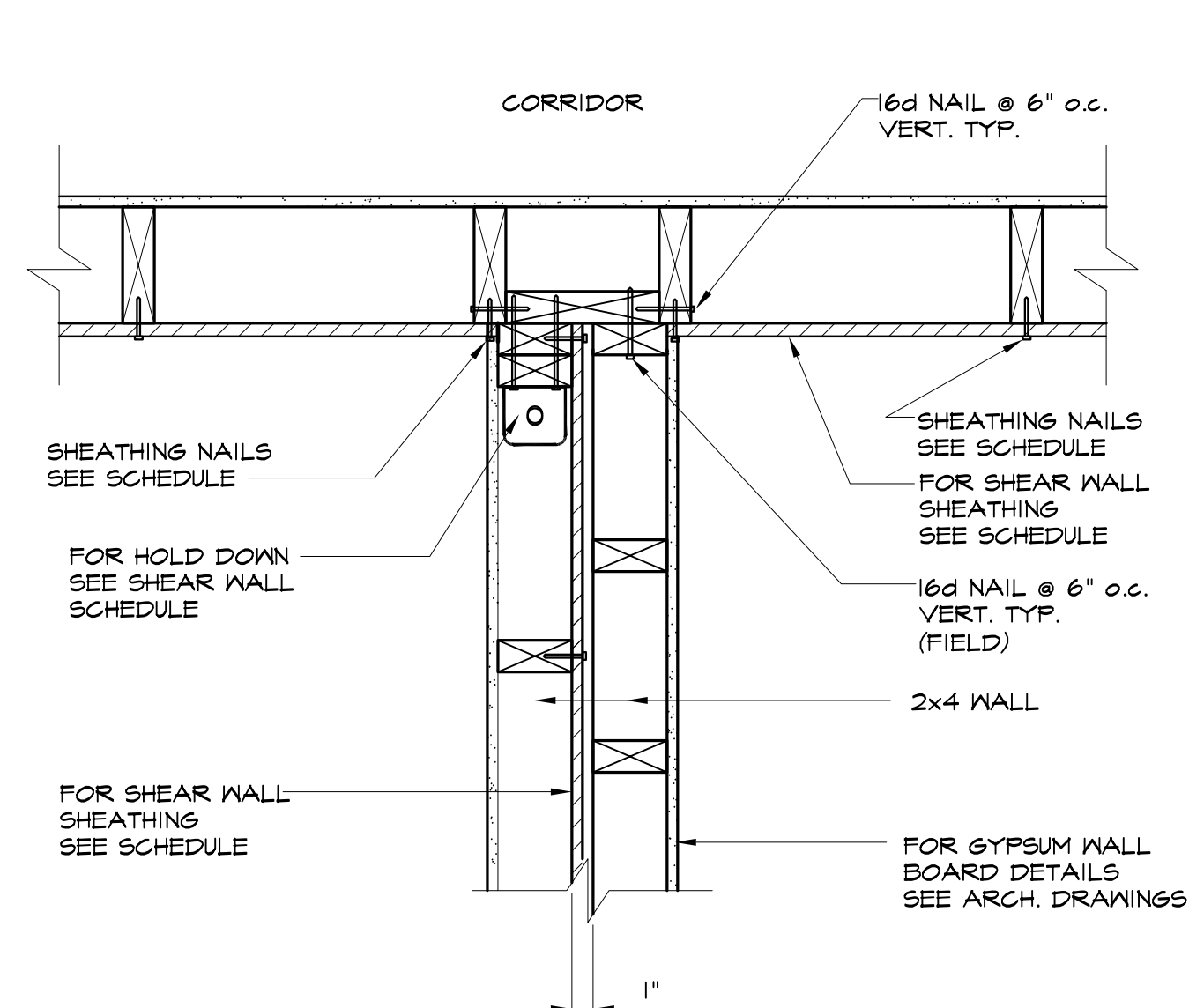
TYPICAL SHEAR WALL CORNER
DETAIL AT CORRIDOR WALL



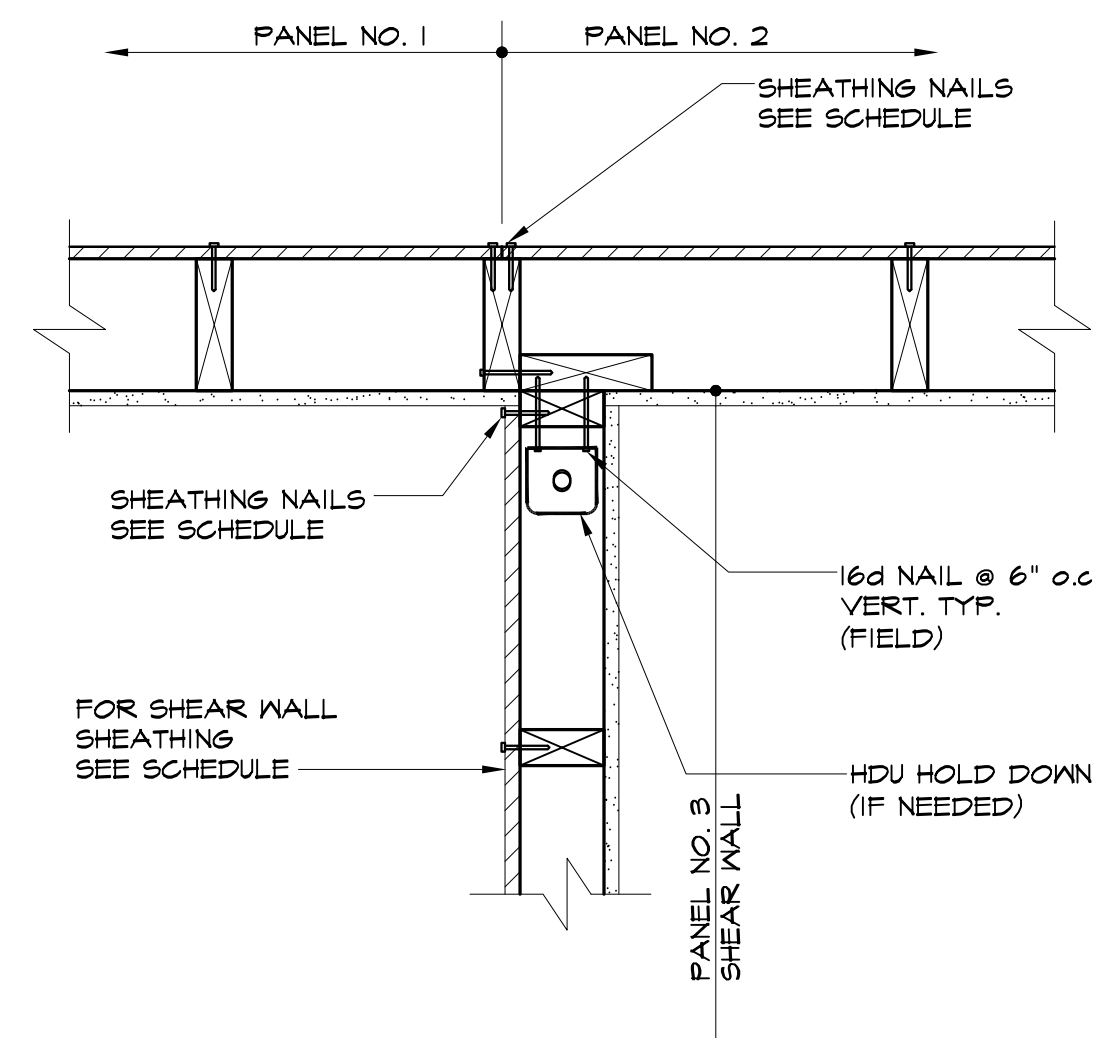
CORRIDOR INTERSECTION NOT AT PANEL POINT
W/ OSB RUNNING THRU



TYPICAL NON-SHEAR WALL DETAIL
AT EXTERIOR WALL



CORRIDOR INTERSECTION NOT AT PANEL POINT



TYPICAL SHEAR WALL DETAILS
AT EXTERIOR WALL

NOTE:
SHOP NAILS NOT SHOWN
FOR CLARITY

— INDICATES FIELD APPLIED
16d NAIL @ 6" o.c. VERT.
— INDICATES FIELD APPLIED
SHEATHING NAIL. SEE
SCHEDULE FOR

Prepared For: 118 on Munjoy Hill, LLC 118 CONGRESS STREET PORTLAND, ME 04101	
Consultant: VEITAS VEITAS engineers 480 Grand Street, Suite 301 Burlington, Massachusetts 02184 TEL: (781) 845-5883 FAX: (781) 845-5905	
Architect: ARCHITYPE Architects 48 Union Wharf Portland, Maine 04101 (207) 772-6022 Fax (207) 772-4056	
Project: 118 ON MUNJOY HILL 118 CONGRESS STREET PORTLAND, MAINE	
Revisions: 100% CONSTRUCTION DOCUMENTS	
Date: 5 MAR 2014	Scale: As indicated
Shear Wall Elevation & Shear Wall Details	
S3.04	